

MOBILE TATTERS GUILD

"Playing With String Since 1987"

January 2009

From the Editor

We had such an enjoyable time at the party. The food was delicious. The conversation delightful. It was said that the games were a little tough—too much thinking was required. However, it did give us ideas on some new techniques to learn during the new year.

Please bring ideas for programs to the January meeting as we will be making plans for the year.

Toodles!

JB

Upcoming Meetings

Mobile Tatters Guild

Monday, January 5,
at 7:00 p.m.
Blacksher Hall
1056 Government Street,
251-433-3875

Knitter's Guild of Mobile

4th Monday of each month
Blacksher Hall
1056 Government Street,
251-433-3875.
Next Meeting is Monday,
January 26, at 7:00 p.m.



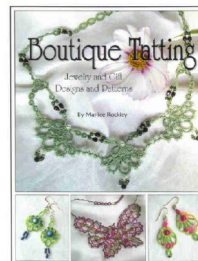
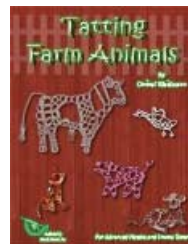
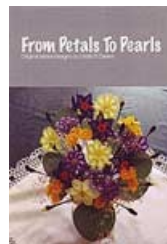
2008 Christmas Party. Back row: Coutie Reeves and Sharon Thomas. Center row: Janine Stebbins, Vincentine Williams, Nettie Cornelson, Mary Ann Pugh, Helen Gewin, Elizabeth Birmingham, Sherron Mosley. Front: Cathy Hayes.

Book Review

For Christmas, my dear husband gave me four new tatting books. *From Petals to Pearls* by Linda S. Davies, *24 Snowflakes in Tatting* by Lene Bjorn, *Tatting Farm Animals* by Christel Weidmann, and *Boutique Tatting* by Marilee Rockley.

I need to start tatting...

So many beautiful designs and so little time.



Reminder:

It's time to
renew your
membership.

Inside this issue:

UPCOMING MEETINGS	1
THANK YOU TIP RECIPE	2
SHOW AND TELL	3
JOYCE'S ANGEL	4
MARJORIE'S ANGEL	5
HAPPY YORKIE	6

visit us online: www.graci.org/tatting

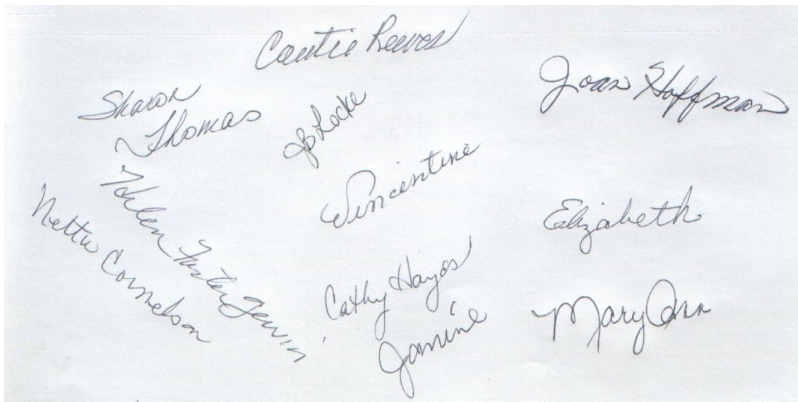
Mobile Tatters' Guild

Dear Jo Anne.

We would like to thank you for the gifts that you gave us. It was so nice of you to think of us during your busy time of moving and preparing for Holidays.

We hope that you have a wonderful New Year with lots of blessings. As you are a blessing to all you come in contact with.

We love you and miss you.



TIP:

A guild member suggested that if you carry your tatting with you, put one of your business cards (if you have one) or put a business card size card with your name and telephone number on it inside the bag with your tatting. For safety reasons, it is not recommended to put your home address on the card—just numbers where you can be contacted in case you accidentally misplace your tatting and it is found.

Recipe

Frozen Cranberry Salad

(from Cathy Hayes' mother)

2 cups raw cranberries, ground (measure before grinding)

1 cup sugar

Mix and let stand 2 hours.

3/4 pound marshmallows (if large, cut up)

1 pint cream, whipped

Mix and let stand 2 hours.

Combine the two mixtures and add

1 cup drained, crushed pineapple

Mix well and freeze.

Keeps well in the freezer and is always ready to serve.

Can be used as a salad or as a dessert.

Makes about 18 servings.



The Laura Tree complete with ornaments and the skirt. Each year new ornaments and motifs will be added to the tree and the skirt.

Show and Tell



Mary Ann Pugh tatted the Dimpled Angel from last month's newsletter. She also tatted the beautiful covered ball ornaments from *DMC Festive Tatting*.

J.B. tatted the Elf designed by Carol Amich. She also tatted the 2008 Snowflake designed by Ruth Perry.



Janine Stebbins showed an antique knitted Christmas stocking that someone asked her to repair.

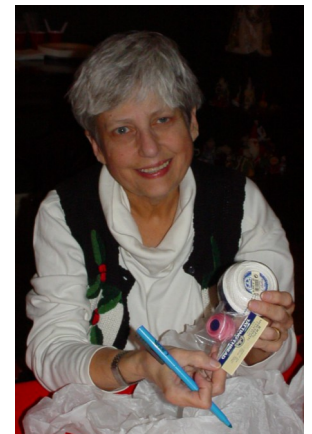


Elizabeth Birmingham's tree of tatted ornaments. Very pretty! I hope to have a tree of tatted ornaments one day.

Vincentine Williams tatted this snowman and framed it for her mother many years ago. What a joy to hang it each year during Christmas time. The pattern is in the *Tatsy* book.



The winners of the brain taxing games we played at the Christmas party. Left: Nettie Cornelson won pink size 20 and pastel variegated size 80 thread. Center: Elizabeth Birmingham won white size 20 and variegated blue size 80. Right: Cathy Hayes won white size 20 and variegated pink size 80.



Joyce's Angel © Martha Ess, May 2002, revised June 2006



Pattern:

Upper Body: Wind 2 shuttles CTM

Head: R: 4 - 4 - 4 - 4 - 4 - 4 - 4 - 4 - 2 - 2 clr. Leave sp for mock picot

Row 1:
SR: 4 / 4 RW
Ch: 2 - 2 - 2 RW
R: 4 + (to mock picot at beginning of SR) 4 clr RW
Ch: 2 - 2 - 2 RW
{R: 4 + (to next p of large ring) 4 clr RW
Ch: 2 - 2 - 2 RW} twice
R: 4 + (to same p) 4 clr DNRW SS

Row 2:
Ch: 3 - 2 - 2 - 3 RW
R: 4 + (to p of Ch of Row 1) 4 clr RW SS
R: 6 - 6 clr SS
{Ch: 6 RW
R: 4 + (to next p) 4 clr RW} 7 times, RW
Sch: join thread to base of ring of previous row, 3 - 2 - 2 - 3 (entire chain worked "on the split")
R: 6 - 6 clr SS

Row 3:
{Ch: 2 - 2 - 2 - 2 +LJ (to base of R) } 3 times
Ch: 2 - 2 SS
R: 5 - 3 - 3 - 3 - 5 clr SS
Ch: 2 - 2 +LJ (to base of R)
{Ch: 2 - 2 - 2 - 2 +LJ (to base of R) } 3 times. Cut and tie.

Skirt: Wind 1 shuttle CTM with ball. Join to 1st p of center Ch of Row 3, with back side facing

Row 4:
Ch: 8 RW
{R: 4 + (to p of large ring of Row 3) 4 clr RW
Ch: 2 - 2 - 2 RW } 3 times
R: 4 + (to p of large ring) 4 clr RW
Ch: 8 +LJ (to p of Row 3 Ch next to large ring) turn SLT

Row 5:
Ch: 15 RW
{R: 4 + (to p of Ch of Row 4) 4 clr RW
Ch: 6 RW } 5 times
R: 4 + (to p of Ch of Row 4) 4 clr RW
Sch: join thread to same p as first ch of skirt, 15 (entire chain worked "on the split") SLT

Row 6:
{Ch: 3 - 3 - 3 +LJ (to base of R of Row 5) } 5 times, turn SLT

Row 7:
Ch: 3 - 2 - 2 - 3 RW
{R: 4 + (to p of Ch of Row 6) 4 clr RW
Ch: 6 RW } 9 times
R: 4 + (to p of Ch of Row 6) 4 clr RW
Sch: join thread to base of R of Row 5, 3 - 2 - 2 - 3 (entire chain worked "on the split") turn

Row 8:
{Ch: 9 +LJ (to base of R of Row 7) } 9 times, turn SLT

Row 9:
{Ch: 2 - 2 - 2 - 2 - 2 - 2 +LJ (to top of LJ) } 9 times. Cut and tie.

Halo: wind 1 shuttle CTM with ball of metallic thread. Join to 1st free p of head ring.

{Ch: 4 +LJ (to next p) } 5 times, turn SLT
{Ch: 8 +LJ (to top of LJ) } 5 times. Cut and tie.

Size: 3 x 2 1/4 inches in size 30 cotton

Materials: 2 shuttles, thread, metallic thread for halo, if desired.

Note: This pattern contains several long split chains. If you prefer, you may work a regular chain and cut and tie.

Abbreviations:

R.....ring
Ch.....chain
SR.....split ring
Sch.....split chain
-, p.....picot
+.....join
+LJ.....lock join, also known as shuttle thread join
clr.....close ring
sp.....space
turn.....a side-to-side turn
RW.....reverse work, an up-and-down turn
SLT.....shoe lace tie
CTMcontinuous thread method
DNRW.....do not reverse work
SS.....switch shuttles

Marjorie's Angel © Martha Ess, April 2002, revised 2006

Size: 2 3/4 x 2 1/4" in size 12 perle cotton,
2 1/2 x 2" in size 30 cotton

Materials: 2 shuttles, thread, metallic
thread for halo, if desired.

Abbreviations:

R.....ring
Ch.....chain
SR.....split ring
SCh.....split chain
-, ppicot
vsp.....very short picot
+.....join
+LJ.....lock join, also known as shuttle
thread join
LPPR.....last picot previous ring
clr.....close ring
turn.....a side-to-side turn
RW.....reverse work, an up-and-down
turn
CTM.....continuous thread method
(do not cut thread between shuttles or
between shuttle and ball)
SLT.....shoe lace tie
DNRW.....do not reverse work
SS.....switch shuttles

Pattern:

Skirt: Wind one shuttle CTM with ball
thread.

Inner Section:

R: 3 - 3 - 3 - 3 - 3 - 3 - 3 - 3 - 3 clr RW
Ch: 16 vsp 3 - 3 - 3 vsp 16 RW
R: 3 - 3 - 3 - 3 - 3 - 3 - 3 - 3 - 3 clr SLT
DNRW
Ch: 18 +LJ (to vsp of prev chain) SLT
turn

Outer Section:

Ch: 3 - 3 - 3 - 3 - 3 - 3 RW
{ R: 2 - 2 - 2 + (to p of large ring) 2 - 2 - 2
clr RW

Ch: 3 - 3 - 3 - 3 RW } 4 times
R: 2 - 2 - 2 + (to p of large
ring) 2 - 2 - 2 clr RW
Ch: 3 - 3 RW
R: 2 + (to LPPR) 2 - 2 - 2 clr
RW
Ch: 3 - 3 RW
R: 2 + (to LPPR) 2 - 2 + (to
3rd p of 1st large ring) 2 - 2 - 2
clr RW (make sure long chain
is not twisted)
{ Ch: 3 - 3 - 3 - 3 RW
R: 2 - 2 - 2 + (to next p of large
ring) 2 - 2 - 2 clr RW } 4 times
Ch: 3 - 3 - 3 - 3 - 3 - 3 +LJ (to
vsp of 1st chain) SLT turn
Ch: 18. Cut and tie to base of
1st ring.

Head and Upper Body:

Wind 2 shuttles CTM

Head: R: 5 vsp 5 - 5 - 5 - 5 vsp 5 - 3 - 3 -
3 clr DNRW

Row 1: SR: mock picot 2 - 2 / 2 - 2 clr
RW

{ Ch: 3 - 3 - 3 RW
R: 2 - 2 + (to p of large ring) 2 - 2 clr
RW } 3 times SS DNRW on last repeat

Row 2: Ch: 8 SS

R: 2 - 2 - 2 - 2 clr SS

Ch: 8 RW

{ R: 2 - 2 + (to p of chain of prev row) 2 -
2 clr RW

Ch: 8 RW } 5 times

R: 2 - 2 + (to p of chain of prev row) 2 - 2
clr RW

SCh: 8 / 8 (SCh joins to base of last R of
Row 1)

R: 2 - 2 - 2 - 2 clr DNRW SS

Row 3: { Ch: 4 - 4 - 4 +LJ (to base of
next ring) } 2 times

Ch: 4 - 4 + (to top p of outer chain of
skirt) 4 +LJ (to base of next ring)



Ch: 4 + (to p of 1st chain of skirt)
4 + (to next p of same chain) 4

+LJ (to base of next ring)

Ch: 4 + (to p of next chain of
skirt) 4 - 4 +LJ (to base of next
ring)

{ Ch: 4 - 4 - 4 +LJ (to base of
next ring) } 2 times. Cut and tie.

Halo: Wind 2 shuttles CTM with
metallic thread.

R: 3 + (to vsp of head) 3 clr

{ SR: 2 + (to next p of head) 2 / 4
clr

SR: 4 / 4 clr } 2 times

SR: 2 + (to next p of head) 2 / 4
clr

R: 3 + (to vsp of head) 3 clr. Cut
and tie.

End Notes



Graci with Santa (the Editor's Yorkie and stuffed toy).

Subscribe!

What a Deal! Annual Membership of \$15.00 includes your subscription to this lovely newsletter. Subscriptions run from January through December. For partial year subscription, pay \$1.25 per month.

Example: August->Dec = 5 months, X \$1.25 = \$6.25.

Mail checks to:

Mobile Tatter's Guild
c/o Mary Ann Pugh, Treasurer
P.O. Box 1206
Fairhope, AL 36533

NAME: _____

ADDRESS: _____

CITY, STATE & ZIP: _____

PHONE NUMBER: _____

BIRTHDATE: _____

EMAIL: _____

CHECK HERE IF YOU DO NOT WISH YOUR ADDRESS OR
PHONE NUMBER LISTED IN THE DIRECTORY WHICH IS
ONLY DISTRIBUTED TO MEMBERS

MOBILE TATTERS
GUILD

January 2009 Newsletter

JB Locke, Editor
5290 Lemans Dr W
Satsuma, AL 36572-2623
JL@PEPPER.NET

We're on the web!
www.graci.org/tatting